

SPS ONE

Line-interactive UPS 500 to 2000 VA

SPS ONE: The best electrical protection for home and professional office

An uninterruptible power supply (UPS) in a mini tower format with Line-interactive topology, Salicru's **SPS ONE** series provides battery backup (with pseudo sine wave inverter output) and overload protection. During power failures, **SPS ONE** devices provide battery backup to enable computer systems to shut down properly and protect against data loss and electronics damage. Operation through automatic voltage regulation (AVR) to correct small voltage fluctuations without having to use the battery, thus extending its life. The AVR function is essential in areas where voltage fluctuations occur frequently.

It features a UPS/PC communication interface via USB with HID protocol, which allows parameter setting, UPS control and shutdown or hibernation of the computer through the USB port. Compatible with Windows, Linux and Mac operating systems. UPS management and monitoring software is also available for closing files/applications for Windows, Linux and Mac families. Free and downloadable from www.salicru.com.

The **SPS ONE** series is available in 500, 700, 900, 1100, 1500 and 2000 VA power ratings.



Applications: Essential security to ensure the continuity of typical office computing tasks.

The numerous computer and multimedia devices we have in our homes, offices and small businesses hold large amounts of personal and professional files and data. All of these systems, however, are highly dependent on one thing: a good quality, stable power supply to ensure that they can be used and enjoyed without interruption. The best solution to prevent interruptions, damage or data loss is the protection provided by a UPS from Salicru's **SPS ONE** series.



SALICRU

Performances

- Line-interactive technology.
- Backup battery for power supply interruptions.
- Overvoltage protection for sensitive devices.
- Automatic voltage stabilisation (AVR)
- Pseudo sine wave output voltage.
- USB interface with HID protocol for all models.
- Management and monitoring software for Windows, Linux and Mac.
- A single on/off button for ease of use.
- LED status indications.
- Automatic restart when power supply restored.
- Compact mini tower format.
- Protection against overloads, short circuits and transients.
- Economic guarantee for connected devices (EU countries only).
- SLC Greenenergy solution.

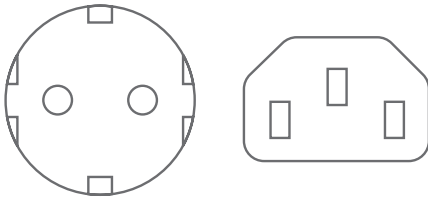


Socket formats available

The **SPS ONE** is available in 2 different socket versions. The sockets are located at the rear of the UPS. The popular Schuko version conforms to the German DIN 49440-1 standard used by the majority of European countries and is also compatible with the standard aviation plugs used in France. The IEC C14 version is widely used to connect computing devices.

SCHUKO

IEC



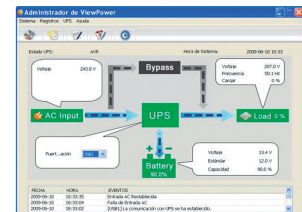
USB interface with HID protocol

- Parameter configuration, UPS control and computer shutdown/hibernation through the USB port.
- Available for Windows, Linux and Mac environments.



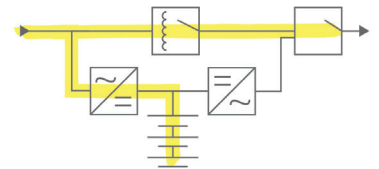
Software

- UPS monitoring and orderly closing of files/ applications for Windows, Linux and Mac families.
- Free and downloadable from www.salicru.com.



Line-interactive technology

Ideal for office environments. It combines Off-line technology with an internal voltage stabiliser for better compensation of the voltage fluctuations and to avoid a greater use of the batteries and so prolong their life time.

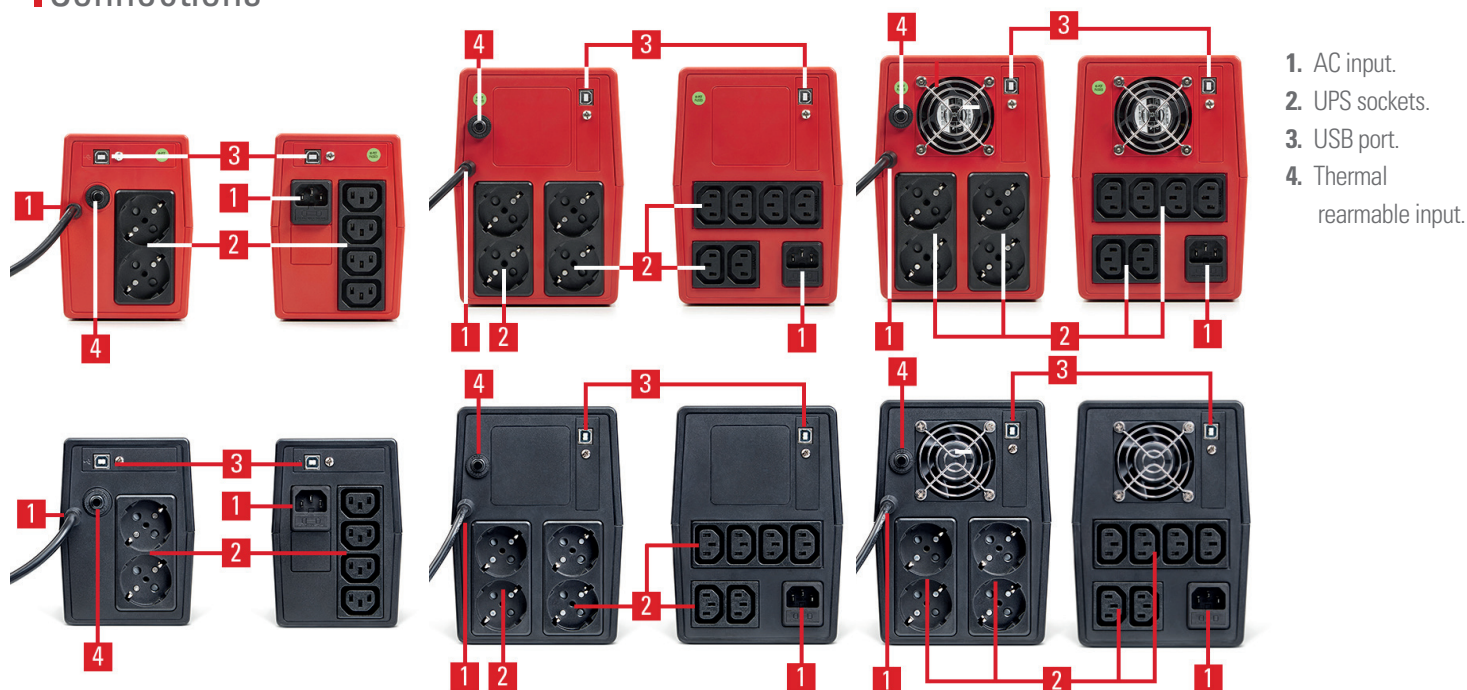


Range

RED MODEL	CODE	POWER (VA / W)	NO. OF SOCKETS	SOCKET TYPE	DIMENSIONS (D × W × H mm)	WEIGHT (Kg)
SPS 500 ONE	662AF000001	500 / 240	2	Schuko	300 × 101 × 142	3.5
SPS 500 ONE IEC	662AF000013	500 / 240	4	IEC	300 × 101 × 142	3.5
SPS 700 ONE	662AF000002	700 / 360	2	Schuko	300 × 101 × 142	4.5
SPS 700 ONE IEC	662AF000014	700 / 360	4	IEC	300 × 101 × 142	4.5
SPS 900 ONE	662AF000003	900 / 480	2	Schuko	300 × 101 × 142	4.9
SPS 900 ONE IEC	662AF000015	900 / 480	4	IEC	300 × 101 × 142	4.9
SPS 1100 ONE	662AF000004	1100 / 600	4	Schuko	320 × 130 × 182	8.2
SPS 1100 ONE IEC	662AF000016	1100 / 600	6	IEC	320 × 130 × 182	8.2
SPS 1500 ONE	662AF000005	1500 / 900	4	Schuko	320 × 130 × 182	10.4
SPS 1500 ONE IEC	662AF000017	1500 / 900	6	IEC	320 × 130 × 182	10.4
SPS 2000 ONE	662AF000006	2000 / 1200	4	Schuko	320 × 130 × 182	11
SPS 2000 ONE IEC	662AF000018	2000 / 1200	6	IEC	320 × 130 × 182	11

BLACK MODEL	CODE	POWER (VA / W)	NO. OF SOCKETS	SOCKET TYPE	DIMENSIONS (D × W × H mm)	WEIGHT (Kg)
SPS 500 ONE BL	662AG000001	500 / 240	2	Schuko	300 × 101 × 142	3.5
SPS 500 ONE BL IEC	662AG000002	500 / 240	4	IEC	300 × 101 × 142	3.5
SPS 700 ONE BL	662AG000004	700 / 360	2	Schuko	300 × 101 × 142	4.5
SPS 700 ONE BL IEC	662AG000005	700 / 360	4	IEC	300 × 101 × 142	4.5
SPS 900 ONE BL	662AG000007	900 / 480	2	Schuko	300 × 101 × 142	4.9
SPS 900 ONE BL IEC	662AG000008	900 / 480	4	IEC	300 × 101 × 142	4.9
SPS 1100 ONE BL	662AG000010	1100 / 600	4	Schuko	320 × 130 × 182	8.2
SPS 1100 ONE BL IEC	662AG000011	1100 / 600	6	IEC	320 × 130 × 182	8.2
SPS 1500 ONE BL	662AG000013	1500 / 900	4	Schuko	320 × 130 × 182	10.4
SPS 1500 ONE BL IEC	662AG000014	1500 / 900	6	IEC	320 × 130 × 182	10.4
SPS 2000 ONE BL	662AG000016	2000 / 1200	4	Schuko	320 × 130 × 182	11
SPS 2000 ONE BL IEC	662AG000017	2000 / 1200	6	IEC	320 × 130 × 182	11

Connections



SPS 500÷900 ONE (IEC) /
SPS 500÷900 ONE BL (IEC)

SPS 1100 ONE (IEC) /
SPS 1100 ONE BL (IEC)

SPS 1500/2000 ONE (IEC) /
SPS 1500/2000 ONE BL (IEC)

Technical specifications

MODEL		SPS ONE
TECHNOLOGY		Line-interactive
FORMAT		Tower
INPUT	Rated voltage	220 V / 230 V / 240 V AC
	Voltage range	Until 162 V ÷ 290 V
	Stabiliser	AVR Buck / Boost
	Rated frequency	50 / 60 Hz
	Auto-detection of frequency	Yes
	Protection	Thermal re-arm or fuse (depending on model)
OUTPUT	Rated voltage	220 V / 230 V / 240 V AC
	Voltage accuracy (battery mode)	±10%
	Waveform (battery mode)	Simulated sinewave
	Frequency	50 / 60 Hz ± 1 Hz ⁽¹⁾
	Transfer time	2 / 6 ms
	Socket type	Schuko (DIN) o IEC
BATTERY	Battery type	Enclosed batteries Pb-Ca without maintenance, sealed, design life 3-5 years
	Recharge time	4-6 hours until 90% capacity
	User replaceable battery	Yes
	Back up time	Up to 20 minutes
	Battery replacement alarm	Yes
COMMUNICATION	Ports	USB HID
	Monitoring software	Compatible with Windows, Linux, Unix and Mac
	Downloadable from	support.salicru.com
INDICATIONS	Type	LED
	Operating modes	Normal / Stabilisation (AVR) / Battery
	Mains present	Green LED
	Alarm	Output battery mode, low battery , charger failure and overload
	Audible	Every 10 s for battery operation. Every 1 s for low battery. Every 0.5 s for overcharge. Continuous for fault 2 s for battery replacement.
	Failure	Red LED
OTHER FUNCTIONS	Cold start (start-up from batteries)	Yes
	Automatic restart	Yes, after the end of back up time
GENERAL	Operating temperature	0° C ÷ + 40° C
	Relative humidity	Uitill 90%, without condensation
	Maxium operating altitude	2,400 masl
	Acoustic noise at 1 metre	< 40 dB
STANDARDS	Safety	EN IEC 62040-1
	Electromagnetic compatibility (EMC)	EN IEC 62040-2
	Operation	EN IEC 62040-3
	Corporate cerification	ISO 9001, ISO 14001, ISO 45001

(1) Battery mode

Information subject to change without notice.

